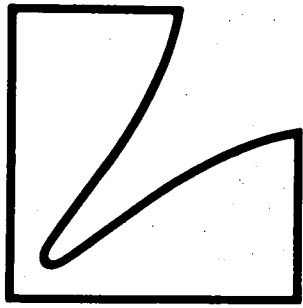
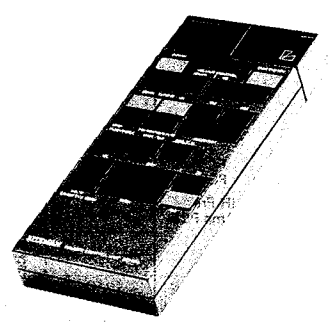
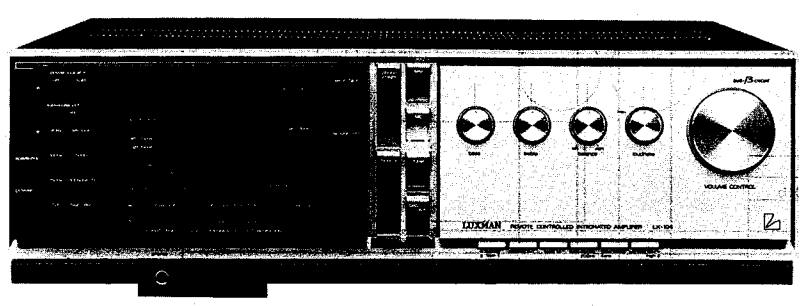


SERVICE MANUAL



Duo-Beta Integrated Stereo Amplifier **LX-104/RC-104**

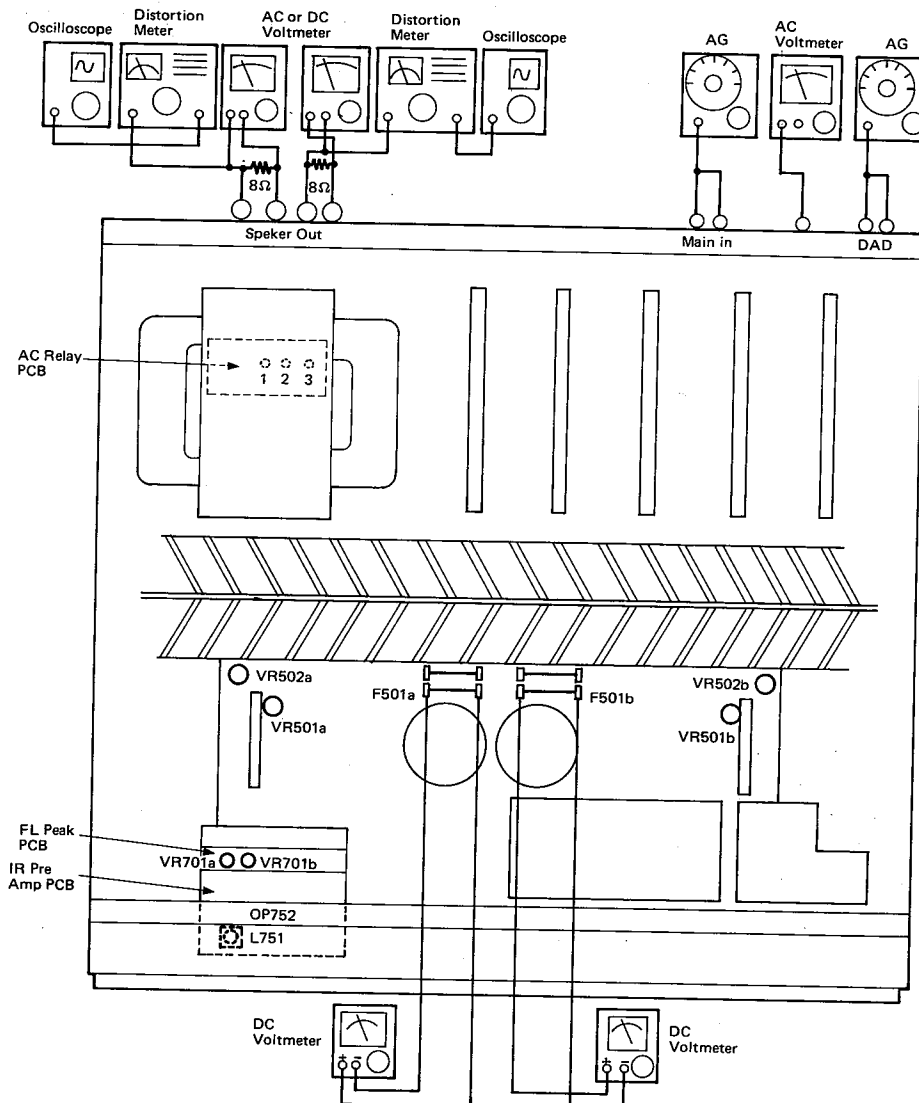


Contents

Adjustment Locations	1	IR Pre Amp PCB Parts List	18
Adjustment Procedure	2, 3	FL-Peak Ind. PCB Parts List	19
Exploded View Parts List (RC-104)	3	HD Phone PCB Parts List	19
Exploded View Parts List	4~6	REM Display PCB Parts List	20
Destination's Parts List	7	Tact SW PCB Parts List	20
Packing Material Parts List	7	3D Display PCB Parts List	21
EQ Amp PCB Parts List	8	Function SW PCB Parts List	21
3D Amp PCB Parts List	9	SP. Terminal PCB Parts List	22
Voltage Amp PCB Parts List	10	Servo SW PCB Parts List	22
Power PCB Parts List	11	AC Relay PCB Parts List	22
Decoder PCB Parts List	12, 13	Power SW PCB Parts List	22
Selector PCB Parts List	13, 14	Trans Mitter PCB Parts List	23
SP SW PCB Parts List	15	IC Handling Guide	24~25
Main Drive PCB Parts List	15	Schematic Diagram (1)	26
Main Amp PCB Parts List	16, 17	Schematic Diagram (2)	27
Tone Control PCB Parts List	17	Schematic Diagram (3)	28
VR Cont PCB Parts List	18	Schematic Diagram (4)	29
Filter SW PCB Parts List	18	Specifications	30

LX-104

Adjustment Locations



VR501a, b DC OFF SET
 VR502a, b IDLING CURRENT

VR701a, b FL INDICATOR
 L751 Infrared Sensitivity

Adjustment Procedures

- 1-0 Preparation:
- 1-0 Set AC variac voltage to 0 V.
- 1-1 Connect terminals 2 and 3 on AC relay PCB (PB84D60543F06) located underneath power transformer.
- 1-2 Connect LX-104 AC plug to AC variac.
- 1-3 Connect idling current adjustment DC voltmeter between F501a and F501b on main amp.
- 1-4 Increase variac voltage gradually and confirm idling current does not drastically increase, then increase AC voltage up to 117 V.
- 1-5 Repeatedly switch power on and off listening for indication of relay's functioning, then bring down variac voltage to 0 V.

- 2-0 Main amplifier adjustment:
- 2-1 Connect 8 ohm resistor and AC milli-voltmeter to speaker terminal.
- 2-2 Connect DC voltmeter to speaker terminal.
- 2-3 Set signal processing switch to on position and connect 1 KHz audio generator output to 'main in' pin jack terminal.
- 2-4 Increase variac voltage gradually to 117 V.
- 2-5 Adjust VR501a (left channel) and VR501b (right channel) to obtain 0 V on DC voltmeter.
- 2-6 Adjust VR502a (left channel) and VR502b (right channel) to obtain an idling current of 180 mA (note: do adjustment two minutes after AC supply was adjusted to 117 V.)
- 2-7 Confirm the distortion at 120 W output (at 8 ohm).
- 2-8 Confirm input signal voltage at 1 KHz 120 W (at 8 ohm).

- 3-0 FL Peak meter adjustment:
- 3-1 Set variac voltage to 0 V.
- 3-2 Set signal processing switch to off position and remove signal generator from main in terminal.
- 3-3 Set variac voltage to 117 V.
- 3-4 Connect audio generator output to DAD (auxiliary) terminal.
- 3-5 Turn on power switch.
- 3-6 Confirm FL meter light functions; tuner function and subwoofer full position indicators light up.
- 3-7 Confirm all LED function indicators light up.
- 3-8 Confirm tape monitor indicator LED lights up.
- 3-9 Confirm phono straight indicator LED lights up.
- 3-10 While testing 3-8 and 3-9 confirm other LED indicators do not light up.
- 3-11 While testing 3-9, activate tape monitor then back to original position (at 3-9) and confirm all functions properly change.
- 3-12 Repeat 3-11 for DAD and tuner functions.
- 3-13 Push lock key switch on.
- 3-14 Confirm other function switches do not change the functions on the unit while lock key switch is on.
- 3-15 Turn lock key switch off.
- 3-16 Turn off FL meter switch and confirm FL meter blacks out.
- 3-17 Push mono, low, and high switches and confirm respective indicators light up.
- 3-18 Push subwoofer off, 50 Hz, 100 Hz, 150 Hz, and full switches and confirm each LED lights up.
- 3-19 Apply 1000 Hz input signal to the unit and measure 38.0 V output on speaker terminals (remove 8 ohm load while adjusting FL meter).
- 3-20 Adjust VR701a and VR701b to obtain 200 W indication on FL meter.
- 3-21 Adjust volume control knob and push peak hold switch on position and confirm FL meter peak hold function.

- 4-0 Confirmation of function switch:
- 4-1 Apply 1000 Hz signal to DAD terminal to obtain 120 W at 8 ohms and measure input signal level.
- 4-2 Confirm tape dubbing circuit function.
- 4-3 Confirm lo-cut filter function.
- 4-4 Confirm hi-cut filter function.
- 4-5 Confirm monaural function.
- 4-6 Confirm balance control function.
- 4-7 Rotate volume control knob to 11 o'clock position and confirm loudness circuit function.

- 5-0 Confirmation of tone control circuit:
- 5-1 Push tone switch in and confirm bass and treble functions.
- 5-2 Push turn-over switch in and confirm tone control effect is increased.

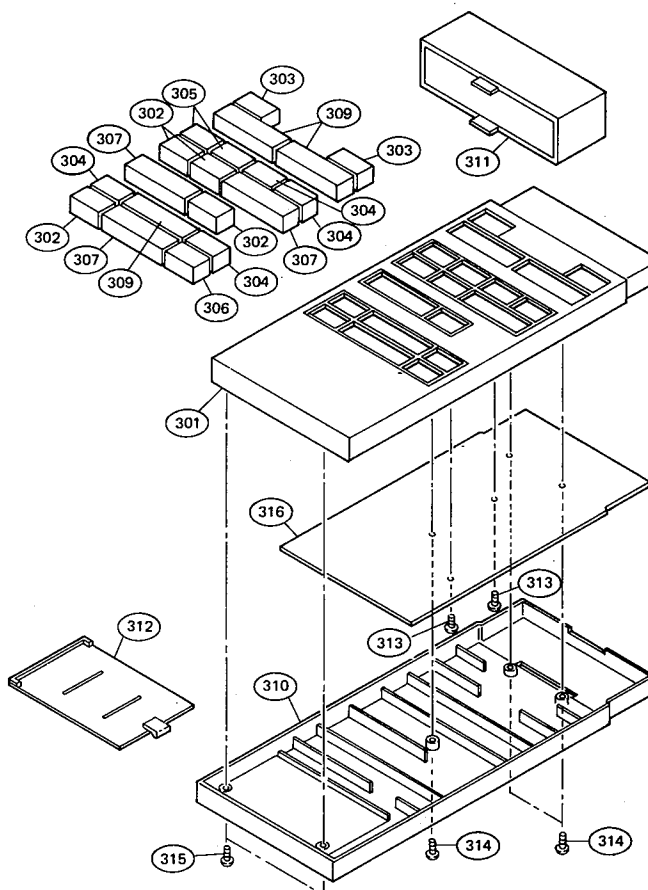
- 6-0 Confirmation of subwoofer:
- 6-1 Hook-up AC milli-voltmeter to subwoofer output terminal.
- 6-2 Apply DAD terminal, 50 Hz signal.
- 6-3 Confirm no output to subwoofer terminal when subwoofer switch is off.
- 6-4 Push 50 Hz switch in; confirm -3 dB output signal from subwoofer terminal.
- 6-5 Apply 100 Hz signal; push 100 Hz switch in; confirm -3 dB output signal from subwoofer terminal.
- 6-6 Apply 150 Hz signal; push 150 Hz switch in; confirm -3 dB output signal from subwoofer terminal.
- 6-7 Push subwoofer full switch in; confirm output signal level does not change at any frequency position.

- 7-1 Confirm output noise level on each function with input both open and shorted (volume control is at maximum position).
- 7-2 Confirm output noise level at volume control minimum position.

- 8-1 With servo switch on Servo-face should be in full out position; with servo switch off, Servo-face should return to full in position.
- 8-2 During Servo-face operation, confirm speaker outputs are completely muted.

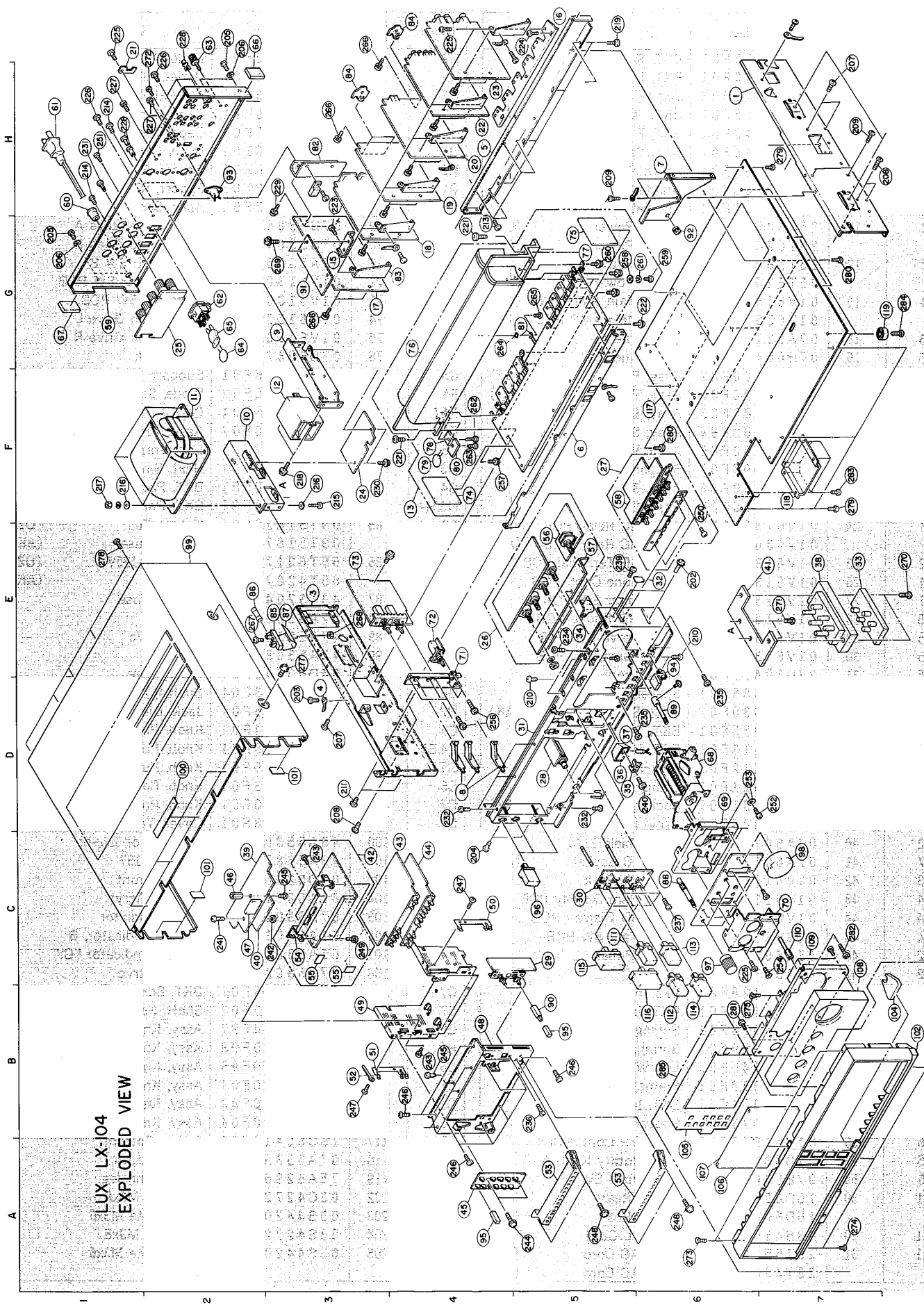
- 9-0 Remote control confirmation:
 9-1 Turn remote control switch on.
 9-2 Hook up oscilloscope probe to P752 on IR PRE AMP PCB.
 9-3 While receiving remote control signal adjust inductor L751 to obtain maximum output waveform on oscilloscope (try to use continuous remote control signal such as volume control up/down). This will maximize remote control range and sensitivity.
 9-4 Confirm remote LED blinks while receiving remote control signal.
 9-5 Change distance between remote control unit and receiver and confirm proper operation of all functions.
 9-6 While changing remote volume level, observe remote volume level indicators to be displaying increasing and decreasing volume (all 5 LED's lit indicate maximum volume level).
 9-7 While remote control volume is in maximum position, turn remote switch on and off and confirm sound level remains unchanged.

RC-104 Exploded View Parts List



Symbol No.	Stock No.	Description
301	07C55088F02	Frame, Upper
302	36A55091F01	Knob, Push A
303	36A55091F02	Knob, Push A
304	36A55092F01	Knob, Push B
305	36A55092F02	Knob, Push B
306	36A55093F01	Knob, Push C
307	36A55094F01	Knob, Push D
309	36A55095F01	Knob, Push E
310	07C55089F01	Frame, Lower
311	07A55090F01	Frame, Top
312	15B51498F02	Cover, Battery
313	03S40012G83	Scr, Tpg. M2x8 Blk
314	03S40012G84	Scr, Tpg. M2X12 Blk
315	03S40012G85	Scr, Tpg. M2X14 Blk
316	01V61400F10	Ass'y, Transmitter PCB

Exploded View



LUX LX-104
EXPLODED VIEW

LX-104

Exploded View Parts List

LX-104

Index	Symbol No.	Stock No.	Description	Index	Symbol No.	Stock No.	Description
H6	1	07D53039F01	BKT, R	G2	62	09T51832F01	Outlet AC (UZ)
E3	3	07D53040F01	BKT, L			09T57934F01	Outlet, AC (AK)
D3	4	29C41045P03	Lug W Around	H2	63	09T51075F01	Terminal, Gnd
H4	5	07D60425F01	BKT, "C"	G2	64	08T52995F01	Capacitor (UZ)
F5	6	07D53042F01	BKT, F			08T57437F09	Capacitor (AK)
H6	7	07B53049F01	BKT, Servo Shaft	G2	65	43T53136F01	Bush, Cap TP150-301
D4	8	45A53081F01	Lever, Push B	H2	66	43A56380F01	Spacer, Rubber 1184
G3	9	07B60680F01	Bracket, Trans A	G1	67	43A57582F01	Spacer, Rubber 1194
F2	10	07B60681F01	Bracket, Trans B	D6	68	01C55485F01	Assy, Servo Mech
F2	11	25T60528F01	Trans, Power (UZ)	D6	69	07B53047F01	BKT, Servo Chas A
		25T62454F01	Trans, Power (AK)	C7	70	07B53048F01	BKT, Servo Chas B
F2	12	25T56008F01	Trans, Power (UZ)	E4	71	07A53053F01	BKT, Push SW B
		25T62455F02	Trans, Power (AK)	E4	72	01V61300F77	Assy, Power SW PCB
F4	13	01V61300F80	Assy, Main AMP PCB (UZ)	E3	73	01V61300F78	Assy, SP SW PCB
		01V63600F29	Assy, Main AMP PCB (AK)	F4	74	01V61500F99	Assy, Main Drive L
G3	15	07A53114F01	BKT, Wire A	G5	75	01V61600F01	Assy, Main Drive R
H5	16	07B60418F01	Bkt, Panel "A"	G4	76	07D60427F01	Heat, Sink
G3	17	01V61300F82	Assy, Power PCB (UZ)	G5	77	07R51146F01	Support, TR
		01V63600F30	Assy, Power PCB (AK)	F4	78	48T56268F02	Diode, S10VB40-2
G4	18	01V61300F83	Assy, Decoder PCB	F4	79	08T52995F01	Cap, 0.01 DE7150FZ
H4	19	01V61300F84	Assy, Selector PCB	F4	80	01V61800F07	Assy, Terminal PCB
H4	20	01V61300F85	Assy, Voltage AMP PCB	G5	81	29A737272	Lug Wrap Around
H1	21	07A56395F01	Support, SW	H3	82	07A60423F01	Heat, Sink
H4	22	01V61300F86	Assy, 3D AMP PCB	G4	83	07A60420F01	BKT, Panel "C"
H4	23	01V61300P87	Assy, EQ AMP PCB	H3,H4	84	07A60421F01	BKT, Panel "D"
F3	24	01V61300F88	Assy, AC Relay PCB (UZ)	E3	85	09T51828F01	Holder, Fus (UZ)
		01V63600F31	Assy, AC Relay PCB (AK)			09T51074F01	Holder, Fuse (AK)
G2	25	01V61300F89	Assy, SP Terminal PCB	E2	86	65T62175F01	Fuse, TA-125V (UZ)
E4	26	01V61300F62	Assy, Tone Cont. PCB			65T42077U22	Fuse (AK)
F5	27	01V61300F64	Assy, Filter SW PCB	E3	87	43T57047F01	Spacer, Fuse
D5	28	01V61300F65	Assy, HD Pnone PCB	C6	88	47A53082F01	Shaft, A
C5	29	01V61300F66	Assy, Servo SW PCB	D6	89	47A56389F01	Shaft, 1376
C5	30	01V61300F67	Assy, Funct, SW PCB	B5	90	47A53084F01	Shaft, C
D5	31	27D60415F01	Chas, Front	G3	91	84D60548F06	Panel, Wire
E6	32	43A55385F01	Spacer, Front Chas	G6	92	43A55383F01	Bushing, Shaft
E7	33	09T51830F01	Plug, SW P-2120 (AK)	H2	93	09T60545F01	Jack, Din TCS1230-01
E5	34	07A53055F01	BKT, Servo Guide	E6	94	36B53064F01	Knob, Push A
D5	35	07A53113F01	BKT, Lamp	A4,B5	95	36B53065F01	Knob, Push B
D5	36	43A53112F01	Bushing, Lamp	C5	96	36B53066F01	Knob, Push C
D5	37	65T60521F01	Lamp, Pilot	C6	97	36A52963F01	Knob, Control
E7	38	09T51831F01	Socket, SW M-1615 (AK)	C7	98	36B53070F01	Knob, Rotary VR
C2	39	01V61300F70	Assy, IR Pre AMP PCB	E2	99	15D53058F01	Cover, Top
C2	40	07A60933F01	BKT, Shield 1143	D2	100	43A55384F01	Spacer, Top Cover
E7	41	07A60682F01	BKT, AC Socket (AK)	C2,D3	101	43A56871F01	Spacer, 1187
C3	42	01V61300F71	Assy, FL Peak	B7	102	07D52966F06	Frame, Front
C4	43	01V61300F72	Assy, Rem Display PCB	B7	104	61A53115F01	Crystal, Acryl
C4	44	01V61300F73	Assy, 3D Display PCB	A6	105	07D53035F03	Frame, Indicator
A4	45	01V61300F74	Assy, Tact SW PCB	A6	106	61A53087F01	Crystal, indicator, B
C2	46	47A60048F02	Shaft, Panel	A6	107	61A53088F04	Crystal, Indicator "C"
C2	47	43A55318F01	Space, C	C7	108	07C53036F04	Frame Servo
B4	48	07C60426F01	Bkt, Ind"A"	C7	109	07B53046F01	BKT, Servo Frame
B3	49	07C53044F01	BKT, Indicator B	C7	110	47A53085F01	Shaft, Servo Guide
C4	50	41A53078F01	Spring, Plate A	C5	111	01V61300F97	Assy, Knob(phono/MM)
B3	51	41A53079F01	Spring, Plate B	B6	112	01V61300F98	Assy, Knob(Phono/MC)
B3	52	29C41045P03	Lug W Around	C6	113	01V61300F99	Assy, Knob(Tuner)
A5	53	07B53038F01	Frame, LED B	B6	114	01V61400F01	Assy, Knob(DAD/AUX)
C3	54	07A53054F01	BKT, Indicator	C5	115	01V61400F03	Assy, Knob(Phono/ST)
C3	55	43A53073F01	Spacer, A	B6	116	01V61400F04	Assy, Knob(Monitor)
E5	56	01V61300F63	Assy, VR Cont. PCB	F6	117	15C60417F01	Cover, Bottom
E5	57	07B53050F01	BKT, Rotary Knob A	F7	118	07A53356F01	BKT, Bottom
F5	58	07B53052F01	BKT, Push SW A	G7	119	75A52969F01	Pud, Trunn-leg
G1	59	15D60416F01	Cover, Rear (UZ)	E6	202	03C42723U01	Scr, Cup M3x6
		15D60416F02	Cover, Rear (AK)	D3	203	03S44205G01	Scr, T-Tite M3x6
H1	60	43B41625J02	Support, Cord	C4	204	03S42723U01	Scr, Cup M3x6
H1	61	28T55335F01	Plug, AC Cord (UZ)	G1,H2	205	03S44205G02	Scr, T-Tite M3x6
		28T43812P02	Plug, AC Cord (AK)				

Index	Symbol No.	Stock No.	Description
G1,H2	206	04S40072G16	Wsr, T. L. M3
D3,H7	207	03S44305F01	Scr, T-Tite M3x6
D3,H7	208	03S44205G01	Scr, T-Tite M3x6
H5,H7	209	03S44205G01	Scr, T-Tite M3x6
D5,E6	210	03S44205G32	Scr, T-Tite M3x5
D3	211	03S44205G01	Scr, T-Tite M3x6
G4	213	03S44205G09	Scr, T-Tite M4x8
H1	214	03S44205G51	Scr, T-Tite M4x8
F3	215	03S43997P84	Scr, Mch M4x12
F1,F3	216	04S40070G35	Wsr, 4.2x10x0.8
F1	217	02S40000G09	Nut, Hex M4
F3	218	03C42723U01	Scr, Cup M3x6
H5	219	03S40018G14	Scr, Tpg M4x8
F4,G4	221	03S44205G49	Scr, T-Tite M4x8
G6	222	03C42723U01	Scr, Cup M3x6
H3	223	03S44205G01	Scr, T-Tite M3x6
H5	224	03S44205G01	Scr, T-Tite M3x6
C6,etc	225	03S44205G01	Scr, T-Tite M3x6
H1,H2	226	03S40012G41	Scr, Tpg M3x8
E3	227	03S43997P41	Scr, Mch M3x8
H1,H2	228	05B41635J02	Rivet, Push
H3	229	03S40018G02	Scr, Tpg M3x8
F3	230	03S42723U01	Scr, Cup M3x6
H1	231	03S40012G41	Scr, Tpg M3x8
D4,D5	232	03S44205G12	Scr, T-Tite M3x4
E5	234	03S44205G01	Scr, T-Tite M3x6
D6	235	03S44205G01	Scr, T-Tite M3x6
B5	236	03C40014G04	Scr, Mch M3x6
C6	237	03C42723U01	Scr, Cup M3x6
E5	239	03C40014G04	Scr, Mch M3x6
D6	240	03S44205G01	Scr, T-Tite M3x6
C2	241	03C40014G15	Scr, Mch M2x8
C3	242	02S40000G11	Nut, Hex M2
B4,C3	243	03S44205G05	Scr, T-Tite M3x5
A5	244	03C42723U01	Scr, Cup M3x6
B4,C3	245	03C40014G04	Scr, Mch M3x6
A4,B5	246	03S44205G01	Scr, T-Tite M3x6

Index	Symbol No.	Stock No.	Description
B3,C4	247	03S44205G05	Scr, T-Tite M3x5
A5,A6	248	03C42723U01	Scr, Cup M3x6
C3	249	03S42723U01	Scr, Cup M3x6
F6	250	03C40014G04	Scr, Mch M3x6
H1	251	03S40012G41	Scr, Tpg M3x8
D7	252	03S43997P60	Scr, Mch M4x8
D6	253	04S40071G03	Wash, 4.1x7.6x1.0
C7	254	03S44205G01	Scr, T-Tite M3x6
D4	256	03S40014G04	Scr, Mch M3x6
F4	257	03S40018G02	Scr, Tpg M3x8
G5	258	04S40071G05	Wsr, 3.1x5.9x0.7
G6	259	03S40011G43	Scr, Mch M3x10
G5	260	03S40018G01	Scr, TPG M3x6
G5	261	04S40070G23	Wsr, 3.3x6x0.5
F4	262	03S44205G21	Scr, T-Tite M3x14
F4	263	03S40018G01	Scr, Tpg M3x6
G4	264	04S40072G16	Wsr, T. L. M3
G5	265	03S40018G01	Scr, Tpg M3x6
G3,H3	266	03C42723U01	Scr, Cup M3x6
E2	267	03S40011G15	Scr, Mch M3x10
E3	268	02S40000G12	Nut, Hex M3
G3	269	03C42723U01	Scr, Cup M3x6
E7	270	03S44205G03	Scr, T-Tite M3x8
E7	271	04S44205G01	Scr, T-Tite M3x6
H2	272	03S43997P67	Scr, Mch M2.6x6
A6	273	03S44205G46	Scr, T-Tite M3x6 TRS
A7	274	03S44205G50	Scr, T-Tite M3x6 FLT
B6	275	03S44205G40	Scr, T-Tite M3x4
E3	277	03S40036U01	Scr, T-Tite M4x8
E1	278	03S44205G02	Scr, T-Tite M3x6
F7,H7	279	03S44205G01	Scr, T-Tite M3x6
F6,G6	280	03S44205G17	Scr, T-Tite M4x6
B6	281	03S40012G48	Scr, T-Tite M3x6
C7	282	03C40014G10	Scr, Mch M3x8
F7	283	03S44205G01	Scr, T-Tite M3x6
G7	284	03S44205G25	Scr, T-Tite M4x10
B6	285	01V61300F93	Assy, Frame Front

(UZ)

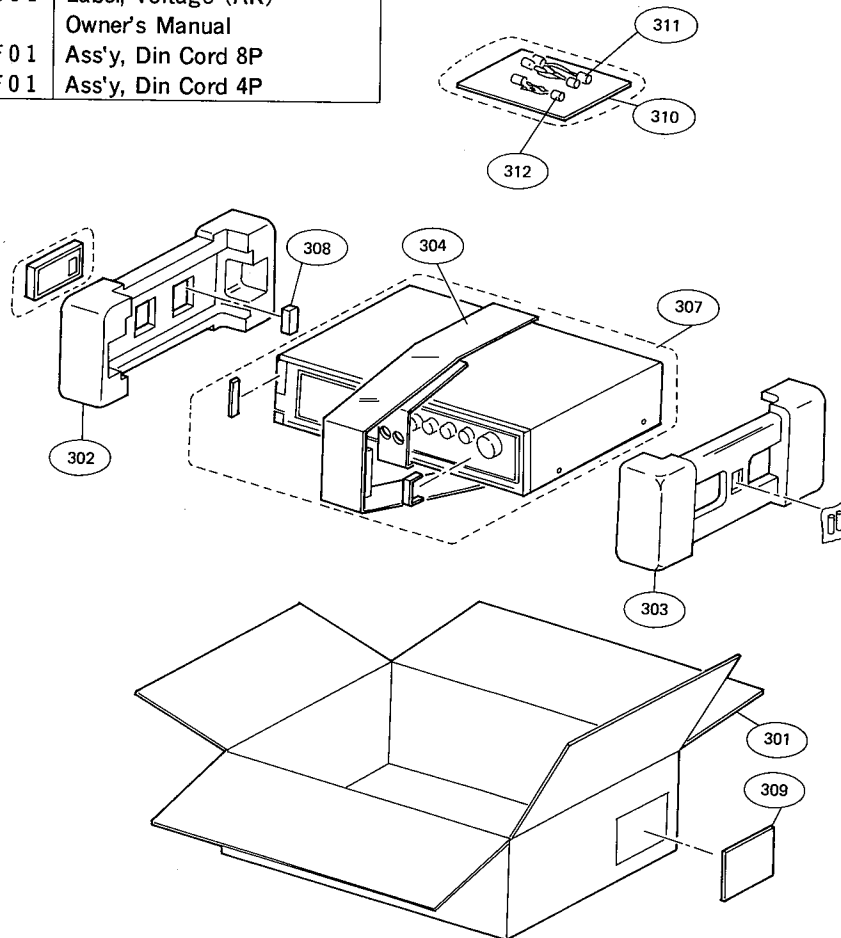
LX-104

Destination's Parts List

Symbol No.	Description	UZ(120V) USA	AK(220V) Europe	Symbol No.	Description	UZ(120V) USA	AK(220V) Europe
11	Trans, Power	25T60528F01	25T62454F01	86	Fuse	65T62175F01	65T42077U22
12	Trans, Power	25T56008F02	25T62455F01	251	Screw, Washer	03S40012G41	03S43997P16
13	Ass'y, Main Amp PCB	01V61300F80	01V63600F29				02S40000G35
17	Ass'y, Power PCB	01V61300F82	01V63600F30	270	Scr, M3x8	Non Use	03S44205G03
24	Ass'y, AC Relay PCB	01V61300F88	01V63600F31	271	Scr, T-Tite M3x6	Non Use	03S44205G01
33	Plug, SW P-2121	Non Use	09T51830F01	309	Label, Voltage	54B44257U06	54B44257U01
38	Socket, SW M-1615	Non Use	09T51831F01	F251,252	Fuse	65T52486F01	65T42077U11
41	BKT, AC Socket	Non Use	07A60682F01	F253,254	Fuse	65T52486F07	65T42077U17
59	Cover, Rear	15D60416F01	15D60416F02	F255	Fuse	65T52486F03	65T42077U13
61	Plug, AC Cord	28T55335F01	28T43812P02	F251-255	Holder, Fuse	09T51960F01	09T51410F01
62	Outlet, AC	09T51832F01	09T57934F01	F951	Fuse	Non Use	65T42077U13
64	Capacitor	08T52995F01	08T57437F09	F951	Holder, Fuse	Non Use	09T51410F01
85	Holder, Fuse	09T51828F01	09T51074F01				

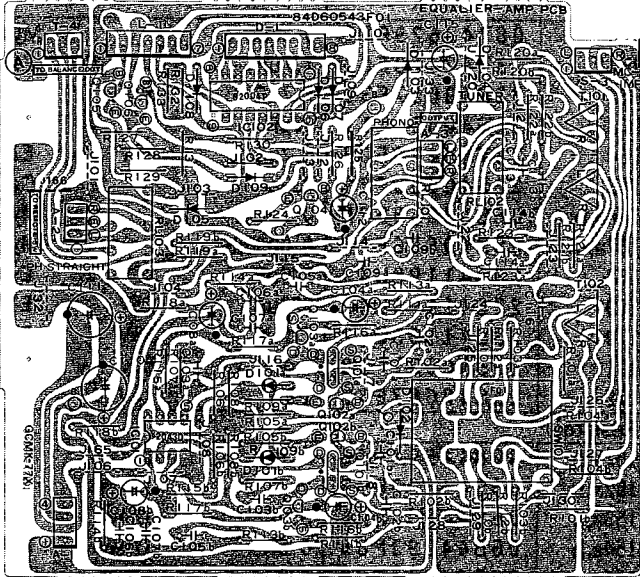
Packing Material Parts List

Symbol No.	Stock No.	Description
301	56C58368F08	Carton, Packing
302	56D57641F01	Packing, Tray (L)
303	56D57642F01	Packing, Tray (R)
304	42A56390F01	Belt, Packing
307	56B40442T08	Packing, Front Frame
308	56A57313F01	Packing, Spacer
309	54B44257U06	Label, Voltage (UZ)
	54B44257U01	Label, Voltage (AK)
310	ME0258	Owner's Manual
311	01T58429F01	Ass'y, Din Cord 8P
312	01T58430F01	Ass'y, Din Cord 4P



LX-104

EQ Amp PCB Parts List



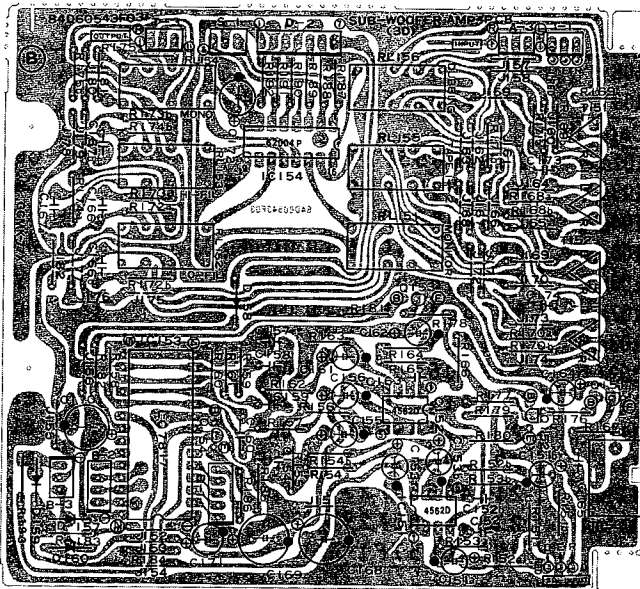
Symbol No.	Stock No.	Description			
D108	48T43189F01	1S1555			
D109	48T51117F01	1S1553			
(Capacitor)					
C101a,b	21S40655F27	220pF			Ce
C103a,b	08S40656F09	0.0047uF			Ce
C104a,b	23S40657F10	10uF 16V			E1
C105a,b	08S40656F15	0.015uF			My
C106a,b	08S40656F08	0.0039uF			My
C107a,b	08T52448F05	0.00047uF			Pp
C108a,b	23T42478F09	4.7uF	25V	LN	E1
C109a,b	21S40655F27	220pF			Ce
C110	23S41198U49	330uF	25V		E1
C111	23S41198U49	330uF	25V		E1
C112	23S40657F21	100uF	25V		E1
C113a,b	21S40655F27	220pF			Ce
C114a,b	21S40655F27	220pF			Ce
C115	23S40657F14	100uF	16V		E1
(Resistor)					
R101a,b	06S44594P06	47K	1/4W		Rd
R102a,b	06S44593P21	15	1/4W		Rd
R103a,b	06S44593P33	47	1/4W		Rd
R104a,b	06S44593P33	47	1/4W		Rd
R105a,b	06S44594P04	39K	1/4W		Rd
R106a,b	06S40105T71	1.8K	1/4W		Rd
R107a,b	06S44593P33	47	1/4W		Rd
R108a,b	06S44593P69	1.5K	1/4W		Rd
R109a,b	06T55175F49	220	1/4W		Rm
R110a,b	06S44593P21	15	1/4W		Rd
R111a,b	06S44593P53	330	1/4W		Rd
R112a,b	06S44593P57	470	1/4W		Rd
R113a,b	06S44594P22	220K	1/4W		Rd
R114a,b	06S44593P95	18K	1/4W		Rd
R115a,b	06S44594P34	680K	1/4W		Rd
R116a,b	06S44593P51	270	1/4W		Rd
R117a,b	06S44594P38	1M	1/4W		Rd
R118a,b	06S44593P59	560	1/4W		Rd
R119a,b	06S44594P22	220K	1/4W		Rd
R120a,b	06S44594P46	2.2M	1/4W		Rd
R121a,b	06S44594P46	2.2M	1/4W		Rd
R124	06T55175F45	150	1/4W		Rm
R125	06S44593P89	10K	1/4W		Rd
R126	06S44594P04	39K	1/4W		Rd
R127	06S44594P02	33K	1/4W		Rd
R128	06S44593P97	22K	1/4W		Rd
R129	06S44594P06	47K	1/4W		Rd
R130	06S44593P97	22K	1/4W		Rd
R131	06S44593P97	22K	1/4W		Rd
R132	06S44593P67	1.2K	1/4W		Rd
R133	06S44593P67	1.2K	1/4W		Rd

Symbol No.	Stock No.	Description
(Relay)		
RL101	80T55298F01	G2V2-1004D
RL102	80T55298F01	G2V2-1004D
RL103	80T55298F01	G2V2-1004D
(Plate, Phono)		
T101	09T60542F02	4P. T5859 TUNER, AUX
T102	09T60542F01	2P. T5856 PHONO
(IC)		
IC101	51T52153F01	NJM2043D-D
IC102	51T60540F01	TD62004P
(SW)		
SW101	80T52120F01	Magnet, SWE016401-S
(Transistor, FET)		
Q101a,b	48T60558F03	2SK240 BL, V
Q102a,b	48T43525F05	2SC1815-Y, GR
Q103a,b	48T51539F01	2SK117(Y)
Q104	48T56278F01	2SC3068
Q105	48S43525F05	2SC1815-Y, GR
Q106	48S43525F05	2SC1815-Y, GR
(Diode, LED)		
D101a,b	48T60971F01	LTZ-R15
D102	48T55186F01	GP10D
D103	48T55186F01	GP10D
D104	48T55186F01	GP10D
D105	48T55186F01	GP10D
D106	48T43189F01	1S1555
D107	48T43189F01	1S1555

LX-104

3D Amp PCB Parts List

LX-104



Symbol No.	Stock No.	Description				
C160	08T42629F32	0.18uF				My
C161	23T42478F09	4.7uF	25V	LN		E1
C162	23S40657F31	4.7uF	50V			E1
C163	21S40655F11	10pF				Ce
C164	23T42478F09	4.7uF	25V	LN		E1
C165	21S40655F29	330pF				Ce
C166a,b	08S40656F25	0.1uF				My
C167a,b	08S40656F10	0.0056uF				My
C168	23S41198U42	220uF	25V			E1
C169	23S41198U42	220uF	25V			E1
C170	23S41198U42	220uF	25V			E1
C171	23S40657F28	1uF	50V			E1
C172	23S40657F10	10uF	16V			E1

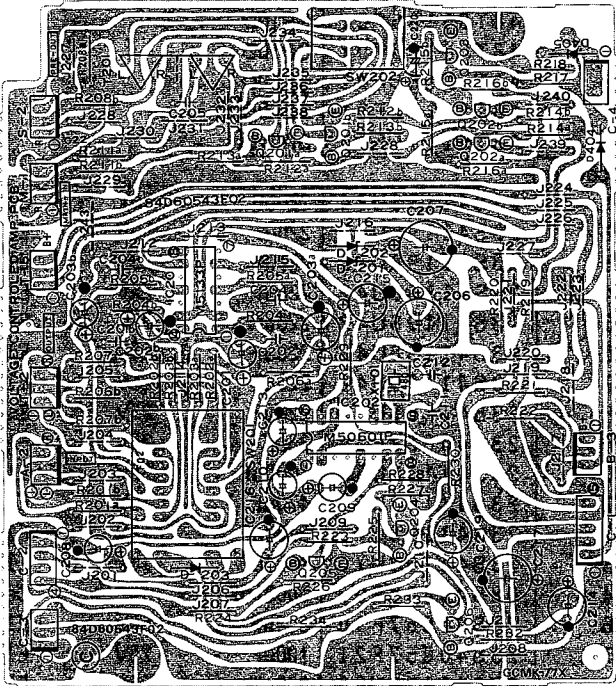
(Resistor)

R151a,b	06S44594P46	2.2M	1/4W		Rd
R152a,b	06S44593P73	2.2K	1/4W		Rd
R153a,b	06S44594P26	330K	1/4W		Rd
R154a,b	06S44593P85	6.8K	1/4W		Rd
R155	06S44594P22	220K	1/4W		Rd
R156	06S44594P14	100K	1/4W		Rd
R157	06S44593P95	18K	1/4W		Rd
R158	06S44594P30	470K	1/4W		Rd
R159	06S44594P38	1M	1/4W		Rd
R160	06S44594P38	1M	1/4W		Rd
R161	06S44594P38	1M	1/4W		Rd
R162	06S44593P65	1K	1/4W		Rd
R163	06S44594P14	100K	1/4W		Rd
R164	06S44593P77	3.3K	1/4W		Rd
R165	06S44593P95	18K	1/4W		Rd
R166	06S44593P57	470	1/4W		Rd
R167	06S44594P22	220K	1/4W		Rd
R168a,b	06S44594P46	2.2M	1/4W		Rd
R169a,b	06S44594P46	2.2M	1/4		
R170a,b	06S44594P46	2.2M	1/4W		Rd
R171a,b	06S44594P46	2.2M	1/4W		Rd
R172a,b	06S44594P38	1M	1/4W		Rd
R173a,b	06S44593P77	3.3K	1/4W		Rd
R174a,b	06S44594P38	1M	1/4W		Rd
R175a,b	06S44593P85	6.8K	1/4W		Rd
R176	06S44594P26	330K	1/4W		Rd
R177	06S44594P30	470K	1/4W		Rd
R178	06S44594P26	330K	1/4W		Rd
R179	06S44594P26	330K	1/4W		Rd
R180	06S44593P65	1K	1/4W		Rd
R181	06S44594P14	100K	1/4W		Rd
R182	06S44594P18	150K	1/4W		Rd
R183	06S44594P22	220K	1/4W		Rd
R184	06S44594P14	100K	1/4W		Rd
R185	06S44594P06	47K	1/4W		Rd
P186	06S44594P06	47K	1/4W		Rd
R187	06S44593P97	22K	1/4W		Rd
R188	06S44593F97	22K	1/4W		Rd
R189	06S44593P97	22K	1/4W		Rd
R190	06S44593P97	22K	1/4W		Rd
R191	06S44593P97	22K	1/4W		Rd
R192	06S44593P97	22K	1/4W		Rd
R193	06S4459P14	100K	1/4W		Rd

Symbol No.	Stock No.	Description				
(Relay)						
RL151	80T55298F01	G2V2-1004D				
RL152	80T55298F01	G2V2-1004D				
RL153	80T55298F01	G2V2-1004D				
RL154	80T55298F01	G2V2-1004D				
RL155	80T55298F01	G2V2-1004D				
RL156	80T55298F01	G2V2-1004D				
(Plate, Phono)						
T151	09T60542F02	4P.T5859 TAPE1				
T152	09T60542F02	4P.T5859 TAPE2				
T153	09T52976F01	1P SUBW00FER				
(IC)						
IC151	51T53311F01	4562D-D				
IC152	51T53311F01	4562D-D				
IC153	51T60560F01	LC7817				
IC154	51T60540F01	TD62004P				
(Transistor)						
Q151	48T51878F03	2SC2878 B				
Q152	48T51118F01	2SA1015-Y				
Q153	48S43525F05	2SC1815-Y, GR				
Q154	48S43525F05	2SC1815-Y, GR				
(Diode)						
D157	48T43189F01	1S1555				
D158	48T43189F01	1S1555				
D159	48T43189F01	1S1555				
D160	48T43189F01	1S1555				
(Capacitor)						
C151a,b	23T42478F09	4.7uF	25V	LN	E1	
C152a,b	21S40655F19	47pF			Ce	
C153a,b	23S42478F09	4.7uF	25V	LN	E1	
C154	21S40655F19	47pF			Ce	
C155	23T42478F09	4.7uF	25	LN	E1	
C156	23T42478F09	4.7uF	25V	LN	E1	
C157	21S40655F23	100pF			Ce	
C158	08S40656F23	0.068uF			My	
C159	08S40656F25	0.1uF			My	

Voltage Amp PCB Parts List

LX-104



Symbol No.	Stock No.	Description			
(Capacitor)					
C201a,b	23T42478F09	4.7 μ F	25V LN	E1	
C202a,b	21S40655F19	47PF			Ce
C203a,b	23T42478F09	4.7 μ F	25V LN	E1	
C204a,b	21S40655F23	100pF			Ce
C206	23S40657F52	220 μ F	16V	E1	
C207	23S40657F52	220 μ F	16V	E1	
C208	23S40657F10	10 μ F	16V	E1	
C209	23S40657F27	0.47 μ F	50V	E1	
C210	23S40657F27	0.47 μ F	50V	E1	
C211	21S40655F23	100pF			Ce
C212	21S40655F23	100pF			Ce
C213	23S40657F27	0.47 μ F	50V	E1	
C214	23S40657F19	33 μ F	25V	E1	
C215	23S40657F32	10 μ F	50V	E1	
C216	23S40657F10	10 μ F	16V	E1	
C217	23S40657F21	100 μ F	25V	E1	
C219	23S40657F31	4.7 μ F	50V	E1	
C220	23S41198U01	0.47 μ F	50V	E1	
C425	23S40657F29	2.2 μ F	50V	E1	
(Resistor)					
R201a,b	06S44594P38	1M	1/4W	Rd	
R202a,b	06S44594P30	470K	1/4W	Rd	
R203a,b	06S44593P59	560	1/4W	Rd	
R204a,b	06S44594P26	330K	1/4W	Rd	
R205a,b	06S44593P59	560	1/4W	Rd	
R206a,b	06S44594P22	220K	1/4W	Rd	
R207a,b	06S44594P34	680K	1/4W	Rd	
R208a,b	06S44594P26	330K	1/4W	Rd	
R211a,b	06S44594P26	330K	1/4W	Rd	
R212a,b	06S44594P30	470K	1/4W	Rd	
R213a,b	06S44594P38	1M	1/4W	Rd	
R214a,b	06S44594P26	330K	1/4W	Rd	
R215a,b	06S44594P30	470K	1/4W	Rd	
R216a,b	06S44594P30	470K	1/4W	Rd	
R217	06S44394P06	47K	1/4W	Rd	
R218	06S44594P14	100K	1/4W	Rd	
R219	06T55175F51	270	1/2W	Rm	
R220	06T55175F51	270	1/2W	Rm	
R221	06T55175F29	33	1/2W	Rm	
R222	06T55175F29	33	1/2W	Rm	
R223	06S44593P89	10K	1/4W	Rd	
R224	06S44593P89	10K	1/4W	Rd	
R225	06S44593P97	22K	1/4W	Rd	
R226	06S44593P97	22K	1/4W	Rd	
R227	06S44594P06	47K	1/4W	Rd	
R228	06S44594P06	47K	1/4W	Rd	
R229	06S44594P06	47K	1/4W	Rd	
R230	06S44593P97	22K	1/4W	Rd	
R232	06S44593P89	10K	1/4W	Rd	
R233	06S44594P02	33K	1/4W	Rd	
R234	06T55175F45	150	1/2W	Rm	

Symbol No.	Stock No.	Description
(Switch)		
SW201	80T52120F02	Magnet, SWE016401-NS
SW202	40T53205F01	Slide SSP32204, Signal
(Plate, Phono)		
T201	09T60542F02	4P T5859 PRE/MAIN
(Resonat, Ceramic)		
X201	91T60972F01	CSB 480E
(IC)		
IC201	51T60559F01	M51133P
IC202	51T60541F01	M50601P
(Transistor)		
Q201a,b	48T51878F03	2SC2878 B
Q202a,b	48T51118F01	2SA1015-Y
Q203	48T43525F05	2SC1815-Y, GR
Q204	48T51118F01	2SA1015-Y
Q205	48T51118F01	2SA1015-Y
Q206	48T56278F01	2SC3068
(Diode)		
D201	48T40150U72	HZ15-3 Zener
D202	48T40150U72	HZ15-3 Zener
D203	48T55186F01	GP10D
D421	48T43189F01	1S1555
D422	48T43189F01	1S1555

